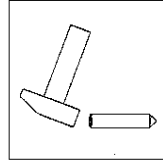
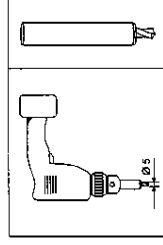


Drilling jig (fixed to the flap)
Item No: F14-6100609201



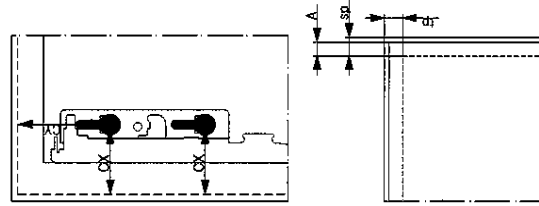
Centre punch
It is included with the drilling template.



5mm special drill bit for flap fittings
Item No: F14-6100608101

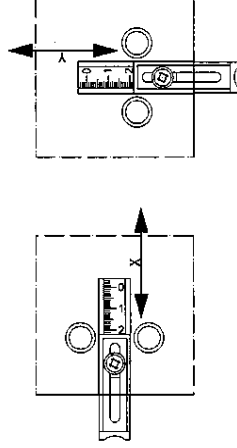
(Special drill bit must be ordered separate.
Necessary for: T-71, T-76, S-35, L-80 and link hinges F-20)

Terminology

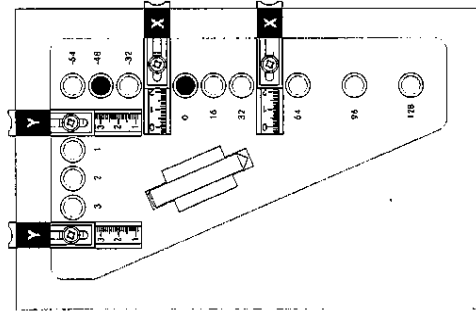


- X = Side gauge measure
- CX = Control measure - distance from the side edge of the flap to the centre of the holes for the fitting
- Y = Side gauge measure
- CY = Control measure - distance from the top of the flap to the centre of the 1st hole of the fitting
- tp = Top panel
- sp = Side panel
- A = Overlay in mm
- F = Gap between the flaps

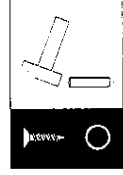
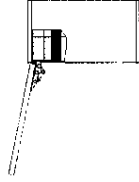
- = Use 5mm special drill bit for drilling
- = Use centre punch



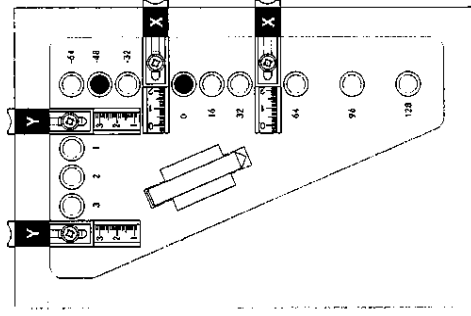
Kinvaro T-65



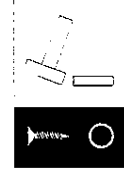
Fitting type Kinvaro T-65	Overlay in mm									
	12	13	14	15	16	17	18	19	19	19
X: sp 16-19 mm	10	11	12	13	14	15	16	17	17	17
CX: sp 16-19 mm	31	32	33	34	35	36	37	38	-	-
Y: tp 16 mm	19	20	21	22	23	-	-	-	-	-
CY: tp 16 mm	34	35	36	37	38	-	-	-	-	-
Y: tp 19 mm	-	-	-	-	19	20	21	22	23	23
CY: tp 19 mm	-	-	-	-	34	35	36	37	38	38



Kinvaro T-70/75



Fitting type Kinvaro T-70/75	Overlay in mm									
	12	13	14	15	16	17	18	19	19	19
X: sp 16-19 mm	15	16	17	18	19	20	21	22	22	22
CX: sp 16-19 mm	36	37	38	39	40	41	42	43	-	-
Y: tp 16 mm	19	20	21	22	23	-	-	-	-	-
CY: tp 16 mm	34	35	36	37	38	-	-	-	-	-
Y: tp 19 mm	-	-	-	-	19	20	21	22	23	23
CY: tp 19 mm	-	-	-	-	34	35	36	37	38	38



KINVARO

Drilling jig for flap fittings

T-65, T-70, T-71, T-75, T-76, S-35, L-80, F-20

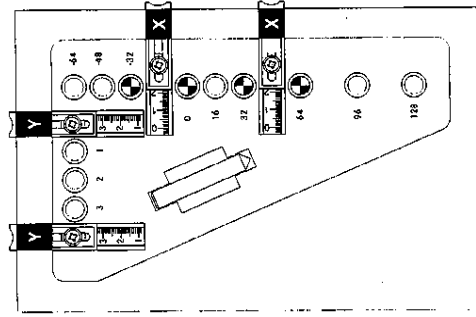


19-MAR-2014 10:11 FROM

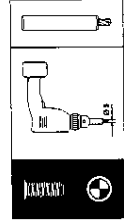
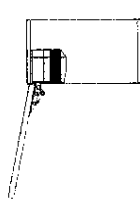
User instruction

ENG

Kinvaro T-71/76

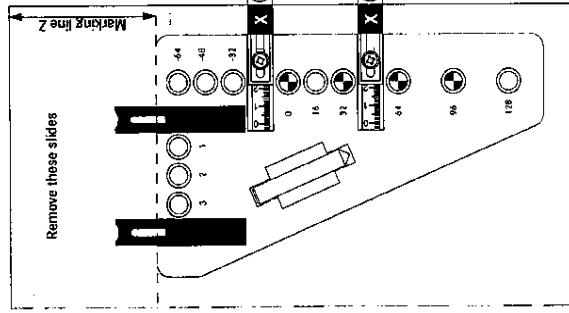


Beschlag-Typ Kinvaro T-71/76	Overlay in mm																	
	12	13	14	15	16	17	18	19	20	21	22	23	24	25	26	27	28	29
X: sp 16-19 mm	16	17	18	19	20	21	22	23	24	25	26	27	28	29	30	31	32	33
CX: sp 16-19 mm	37	38	39	40	41	42	43	44	45	46	47	48	49	50	51	52	53	54
Y: tp 16 mm	35	36	37	38	39	-	-	-	-	-	-	-	-	-	-	-	-	-
CY: tp 16 mm	66	67	68	69	70	-	-	-	-	-	-	-	-	-	-	-	-	-
Y: tp 19 mm	-	-	-	-	35	36	37	38	39	40	41	42	43	44	45	46	47	48
CY: tp 19 mm	-	-	-	-	66	67	68	69	70	71	72	73	74	75	76	77	78	79



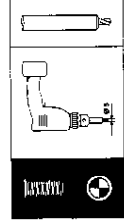
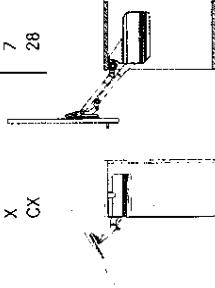
Special drill bit F146100608101

Kinvaro S-35/L80



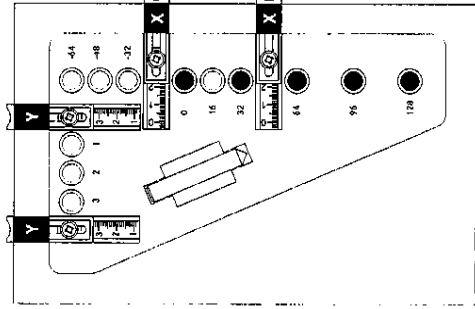
Fitting type Kinvaro S-35	Overlay in mm																	
	13	14	15	16	17	18	19	20	21	22	23	24	25	26	27	28	29	30
Z	114	115	116	117	118	119	120	121	122	123	124	125	126	127	128	129	130	131
X	7	8	9	10	11	12	13	14	15	16	17	18	19	20	21	22	23	24
CX	28	29	30	31	32	33	34	35	36	37	38	39	40	41	42	43	44	45

Fitting type Kinvaro L-80	Overlay in mm																	
	13	14	15	16	17	18	19	20	21	22	23	24	25	26	27	28	29	30
Z: Typ 1	127	128	129	130	131	132	133	134	135	136	137	138	139	140	141	142	143	144
Z: Typ 2	147	148	149	150	151	152	153	154	155	156	157	158	159	160	161	162	163	164
Z: Typ 3	167	168	169	170	171	172	173	174	175	176	177	178	179	180	181	182	183	184
Z: Typ 4	187	188	189	190	191	192	193	194	195	196	197	198	199	200	201	202	203	204
Z: Typ 5	207	208	209	210	211	212	213	214	215	216	217	218	219	220	221	222	223	224
X	7	8	9	10	11	12	13	14	15	16	17	18	19	20	21	22	23	24
CX	28	29	30	31	32	33	34	35	36	37	38	39	40	41	42	43	44	45

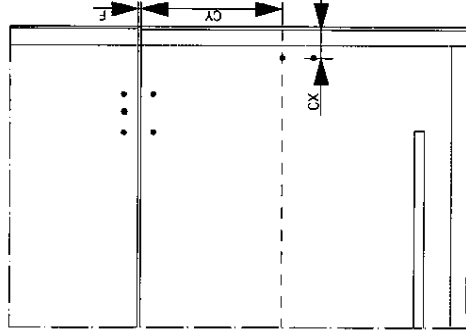


Special drill bit F146100608101

Kinvaro folding flap fitting F-20 Fixing bracket (lower flap)



Total height of cabinet in mm	F-20 Typ	Y	CY	Pair of holes
520-529	2	38	133	32/64
530-539	2	21	148	64/96
540-549	2	36	163	64/96
550-559	2	19	178	96/128
560-569	3	18	145	64/96
570-579	3	33	160	64/96
580-589	3	16	175	96/128
590-599	3	31	190	96/128
600-609	4	11	138	64/96
610-619	4	21	148	64/96
620-629	4	9	168	96/128
630-639	4	19	178	96/128
640-649	4	29	188	96/128
650-699	5	19	146	64/96
700-749	6	29	156	64/96
750-800	7	39	166	64/96



Fitting type

Kinvaro F-20

X: sp 16-19 mm

CX: sp 16-19 mm

Overlay in mm (side)

13	14	15	16	17
3	4	5	6	7
24	25	26	27	28



